

THE CURRENT

Recent Events | Important Reminders | Helpful Information

Office Hours

The office is open 7:30 am – 1:30 pm, Monday-Friday

Closed - Saturday and Sunday

Mail is ready for pick-up by 12:30 pm Monday-Friday. No Saturday delivery.

Communication

For comments, repair requests, and questions about the community, please contact the Wavecrest office address in Basics below.

For direct communications with the Board, please e-mail the [Board Secretary](#). This blue link should open an email for you.

Basics

Wavecrest Resort.
7148 Kamehameha V Hwy
Kaunakakai, HI 96748
Phone: (808) 558-8101.
Fax: (808) 558-8102
info@wavecrestaoao.com.
Emergency Phone:
(808) 336-1048.
Security: (808) 658-0143
True Emergency dial 911



Welcome back to Zaida!

Long term owners here at Wavecrest remember **Zaida Place** from a few years ago when she worked in the front office. Now we welcome her back, after we said our fond farewells to Matt Childs in February. Matt went on to reenlist in the Army (he'd served before in the Marines) and to train for a new career in service to our country.

SO LONG MATT,
WE'LL MISS
YOU, PRECIOUS,
AND ZOE!



Social Events Sparkle

In **December** Roger and Steven hosted the second annual Holiday Dessert Potluck for owners and visitors alike, offering a chance to sing favorite songs of the season while drinking mulled wine and hot cocoa. A great turn out and wonderful food made it a night to remember.

In **February** our annual Bingo Nights returned, thanks to Carolyn Dejong who with her husband Lyle rent here every year. Great prizes and fun interaction guaranteed that almost every available seat in the Cabana was filled!



This year's Owners Luau after the Annual Meeting on **March 13** was a fun reminder of all our island home has to offer. A big thank you goes out to the whole Wavecrest team for making it a great time.



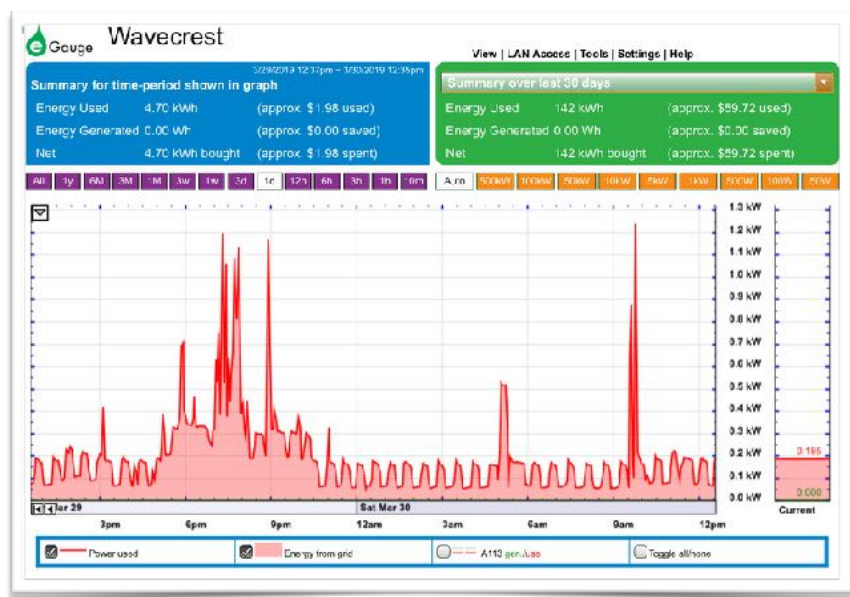
Use your phone to pay for Laundry

You don't have to remember your credit card or quarters when doing laundry in our new Speed Queen machines. Just tap your iPhone to the payment area and you're good to go! Or use a card that has an EMV chip in it. It is very convenient, and super cool!

Take charge of your electrical use!

Did you know that you can sign on to your E-gauge account online and watch your electric use in real time? See what happens when you fire up your microwave, InstaPot, or turn on your coffee maker. Even small electrics can use a lot of power! You'll see the baseline during the day when only things like your cable TV box is on and your refrigerator is cycling on and off. Then add in an overhead fan to see if it makes a difference. Anything with a motor or heating element can make things spike, but it's a worthwhile pursuit to weed out what you might not need. For example, I was able to turn off the drying cycle on my dishwasher. Over the year that can add up.

To find out how, please email Zaida Place at the Wavecrest office. She'll get you all the information you need to see a page similar to the one pictured below.





Cabana Committee

The Cabana Committee is working with Ted Johns, our Resident Manager, to add two bar-height rounds onto the support beams for BBQ users to stand around, set drinks on and engage in conversation. They will be 18" higher than table height, so they would act as an additional surface for food when folding tables are brought in for events like the Owner's Luau or potlucks. The photo-rendering above shows how they will look.

Homeowners Need On-Island Representative

All Wavecrest owners must have an assigned on-island representative, and keep the office informed of that individual's current contact information. It is particularly important for owners who rent out their units, either for short term or long term purposes, as required by Hawaii state law. That individual will be the first point of contact if a renter or the office has an access issue, or in the case of an emergency. In addition it is important for any owner who is away from their property, whether they rent or not, to make sure that the office is informed of current contact information for their on-island rep. That trusted person will be able to perform periodic checks and inform owners of status changes, as well as providing staff with emergency access to the unit, if needed. If no contact is provided, the AOA has the authority to enter your premises in an emergency by any means available, and you will be billed for any damage/repairs caused by the emergency entry.

Please see **Hawaii's Landlord Tenant Code, Section 43.D** and the **Transient Accommodation Tax bill HB 2078 HD2 SD2 CD1 ACT 326 (7/10/12)** for more details.





Website Redesign

The Wavecrest website
www.wavecrestaoao.com

has been redesigned with the goal to making it less vulnerable to malicious hacking, and easier for owners to use. Parts of it are still developing and will continue to be refined, but we hope the new look and function will be helpful to owners and to guests and renters alike. Thanks to Neil, Matt, Roger, and now Zaida who all spent time and effort to getting it in place and looking good.

Upgrades to our public WiFi

A lot of effort has gone into upgrading the coverage, signal strength and speed of our complimentary WIFI. Neil Strock has volunteered a great deal of his holiday time to accomplish it. New devices and networks have been added, and now there is a Wavecrest_6 and Wavecrest_7 to use as well as the previous 1-5. All networks are optimized for use outside and on your lanai. Because of coverage issues on the inside of your unit, one network might be stronger in your bedroom, and another one stronger in the living room or out on the lanai. You'll have to test which works best for your unit. Passwords to all public WiFi networks are "wavecrest", but you will need to sign in to each separately, at least the first time you use it.

